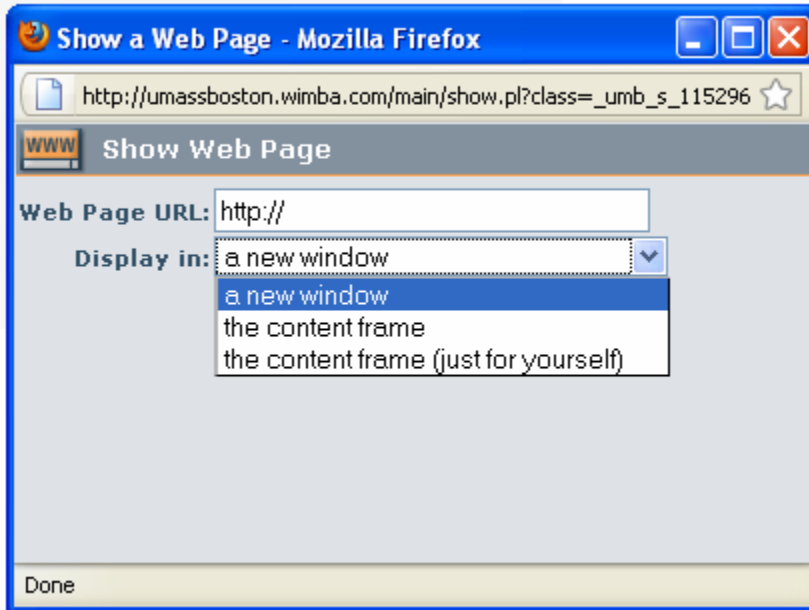


Using YouTube with Wimba Classroom

The new version of Wimba Classroom (for Spring 2011) has issues with sharing YouTube videos in class.

Normally, the instructor will click the “Web” button and see the “Show a Web Page” dialog window (Figure 1).



Typically, the instructor selects “the content frame” rather than “a new window.”

The video then plays in the content frame (the main slide area) of the classroom.

However, as of Spring 2011, students (or faculty) using Firefox or Safari as a browser will not see the YouTube video. They will simply see a blank white space.

There are some short-term and long-term workarounds for this issue.

If you only rarely use YouTubes, you can try one of the following:

- 1) Instead of opening the web page in the content frame, select “a new window.” This works fine, but it may confuse students, as the window (or tab) that opens will not be on top, so the student will have to hunt for it. The video typically plays immediately, so the student reports the symptom of “I can hear it but I can’t see it” meaning it’s playing in an unseen window or tab.

- 2) You can simply text the URL (web address) of the YouTube video in the text chat area on the lower left of the screen. This has the advantage of giving the student control over where and when the video is displayed. The disadvantage is less control of the presentation by the presenter.

If you use YouTube videos frequently, you may want to add the videos as content to your classroom. If you do not feel comfortable doing this, a Wimba support staff person can help. Email umb.wimba@umb.edu for assistance.

ADDING A LINK OR FILE

1 – Go to the classroom landing page and click *Add & Manage Content*.



Wimba Classrooms > Wimba Staff Training Classroom

Wimba Classroom [Add to Calendar](#) [Add & Manage Content](#) [Room Settings](#) [View Records](#) [Advanced](#)

[Enter this Room](#) [Close this Room](#) [Setup wizard](#) [Wimba Classroom Help](#)

Wimba Staff Training Classroom (Open)

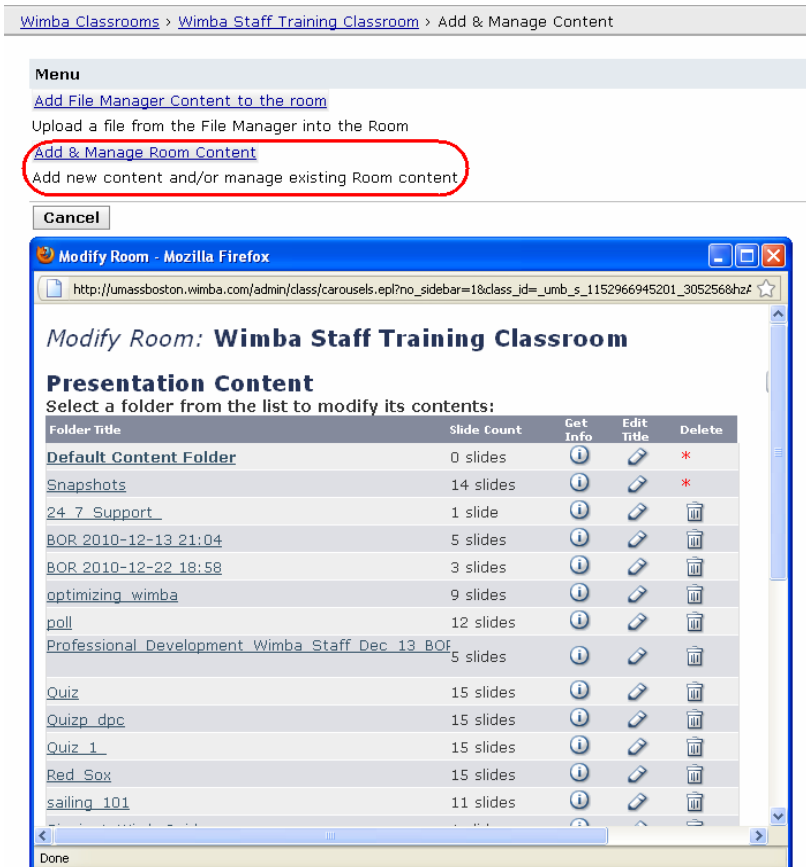
Wimba Staff Training Classroom

Phone Access: **Dial-in numbers:** **Pin codes:**

Phone: (201) 549-7592 Instructor: 56637254
Student: 56637247

Here is the list of the recorded archives for this room:

Then click Add & Manage Room Content – a popup will appear as shown below.



Wimba Classrooms > Wimba Staff Training Classroom > Add & Manage Content

Menu

[Add File Manager Content to the room](#)

Upload a file from the File Manager into the Room

[Add & Manage Room Content](#)

Add new content and/or manage existing Room content

[Cancel](#)

Modify Room - Mozilla Firefox

http://umassboston.wimba.com/admin/class/carousels.epl?no_sidebar=1&class_id=umb_s_1152966945201_305256&hzF

Modify Room: Wimba Staff Training Classroom

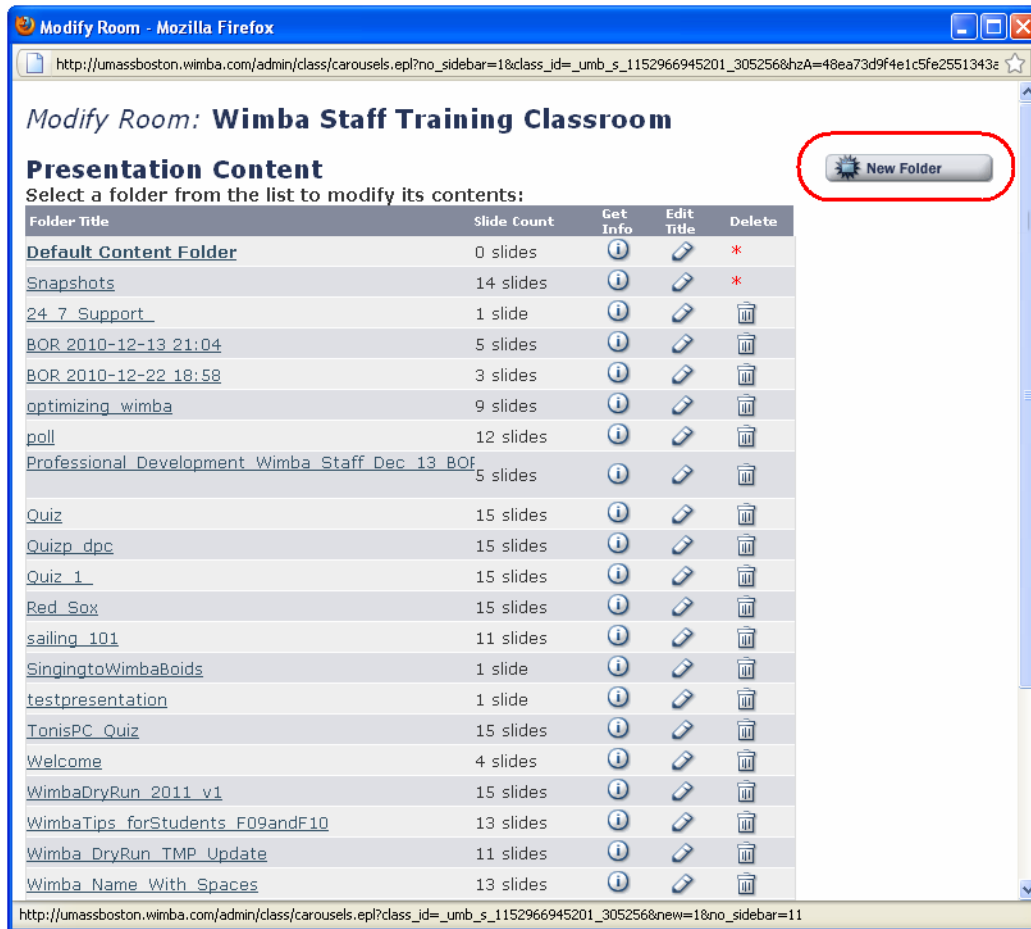
Presentation Content

Select a folder from the list to modify its contents:

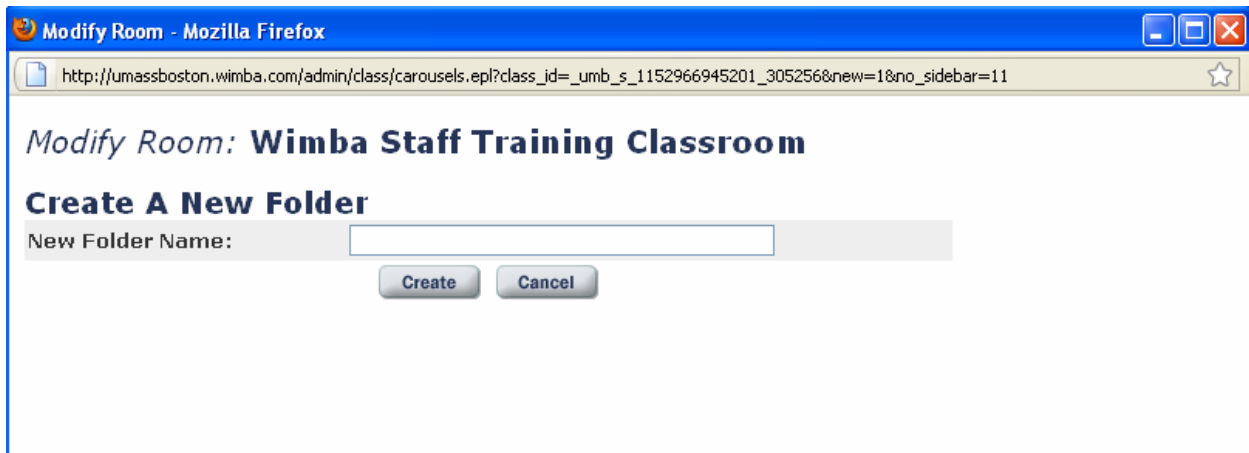
Folder Title	Slide Count	Get Info	Edit Title	Delete
Default Content Folder	0 slides			
Snapshots	14 slides			
24_7_Support_	1 slide			
BOR 2010-12-13 21:04	5 slides			
BOR 2010-12-22 18:58	3 slides			
optimizing_wimba	9 slides			
poll	12 slides			
Professional Development Wimba Staff Dec 13 BOR	5 slides			
Quiz	15 slides			
Quizp_dpc	15 slides			
Quiz_1_	15 slides			
Red_Sox	15 slides			
sailing_101	11 slides			

Done

Note the scrollbars on the previous image. This window is hiding a very important button. Either scroll or enlarge the window so you see the *New Folder* button as shown below.



This pops up the following window, allowing you to fill in a name for a folder to keep your videos (e.g. "YouTubes")



Now add content to the folder in one of two ways - as a URL or as an html file.

Modify Room - Mozilla Firefox

http://umassboston.wimba.com/admin/class/content.epl?class_id=_umb_s_1152966945201_305256&select_carousel=_u

Modify Folder: Wimba Staff Training Classroom: YouTube

Empty folder selected. Please begin adding content to your folder below.

Upload New Content: Display this content in the eBoard

Or Add a URL:
Enter the full URL in the text field above.
(URLs will display in a new browser window.)

Or Create New Poll: Multiple Choice Open Ended Questionnaire Bullet List

Create a single multiple-choice question. Respondents can select one (or more) choice(s). Results can be immediately published to the participants.

Done

The link is just the address of the embeddable video. Note this address is **not** the same as the regular YouTube address. There is a "video ID" which is the same, but the address looks a bit different.

The normal YouTube address looks like:

<http://www.YouTube.com/watch?v=dtBr5JKSuks>

The embedded YouTube address looks like:

<http://www.YouTube.com/embed/dtBr5JKSuks>

Note that any extra parameters like "?q=1000" or "&featured=true" should be removed; the last part (shown bolded) should just be "/embed/" followed by letters and numbers.

If you want to add an html file instead, simply create a text file with Notepad or similar basic editor. Name the file YouTube_BloodPressure_1.html, or whatever name makes sense to you, as long as the .html extension is there.

Then, get embed code of the YouTube video. To do this, go to the YouTube video's page, and click the "Embed" link below the video.



You should see something like this:

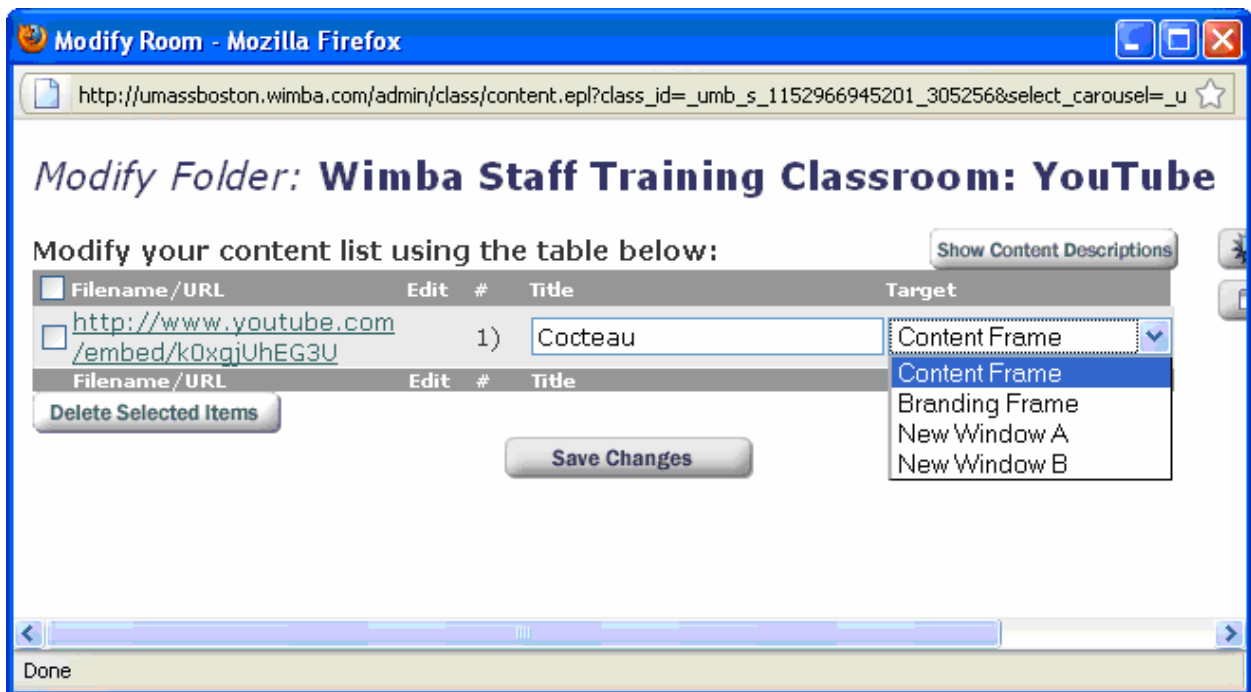
```
<iframe title="YouTube video player" width="480" height="390"
src="http://www.YouTube.com/embed/dtBr5JKSuks" frameborder="0"
allowfullscreen></iframe>
```

Cut and paste that code into your file. Then, add <html> at the very beginning and </html> at the very end. Your file should look like:

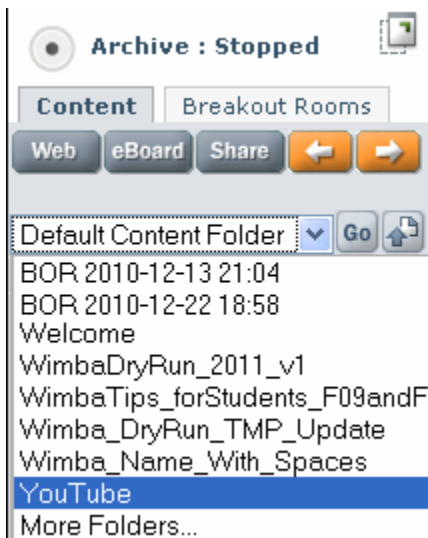
```
<html><iframe title="YouTube video player" width="480" height="390"
src="http://www.YouTube.com/embed/dtBr5JKSuks" frameborder="0"
allowfullscreen></iframe></html>
```

Then, upload the file in *Add/Manage Content* as shown on the previous page.

For either the link or file upload, you can rename the title to something easy to remember. Also, you want to select "Content Frame" in the "Target" drop down on the right side.



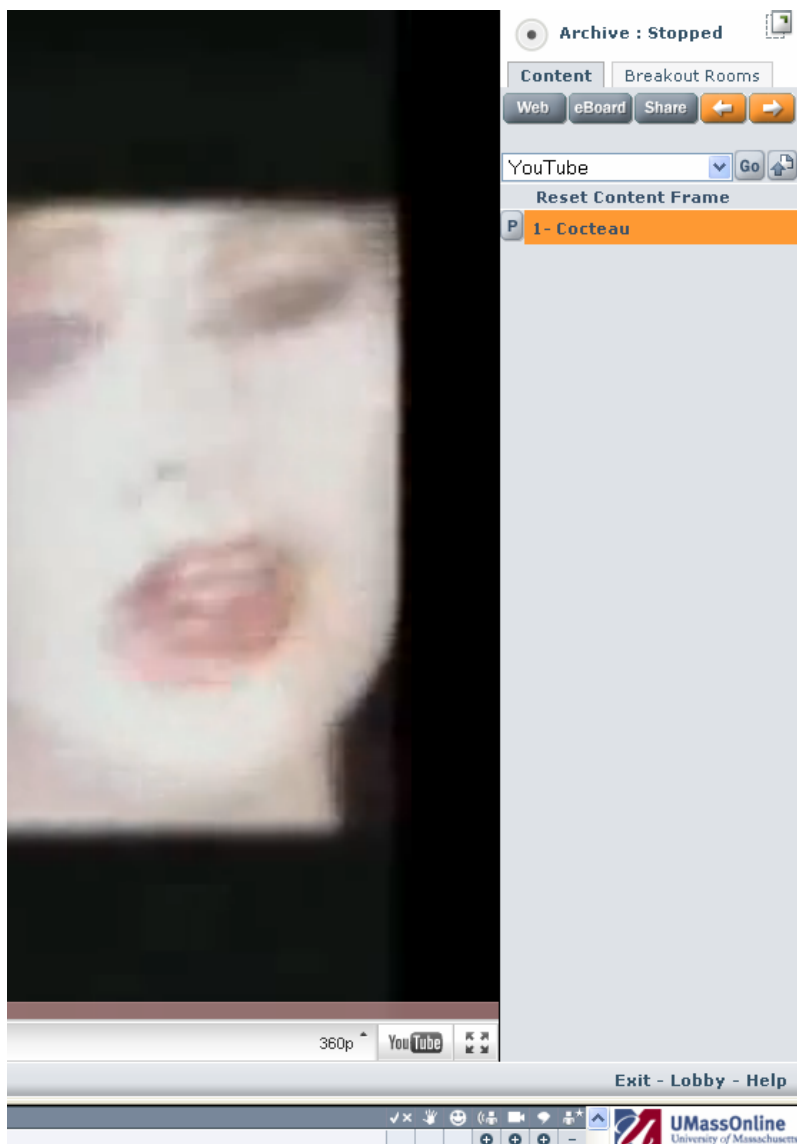
Once you have created links and/or uploaded files, you simply find the folder in the Wimba classroom:



You can then select the videos just as you would select slides in a PowerPoint presentation.

Note that if you use the link option, the video will fill up the whole content frame.

With the file and embed code, the video typically fills up a 480x390 pixel area.



Notes:

If you use links, you can not transfer these across semesters. With the files, you would still need to upload them, but you can reuse the html files you created.

The YouTube embed code contains html that you can tweak if you know what you are doing. For example, you can change the width and height to make the video larger or smaller.

The original video in some instances (e.g. copyright) may have embedding disabled, in which case uploading a URL or file will not work.

If you have several YouTube videos to upload, you may wish to create separate folders, either by date or by subject matter.