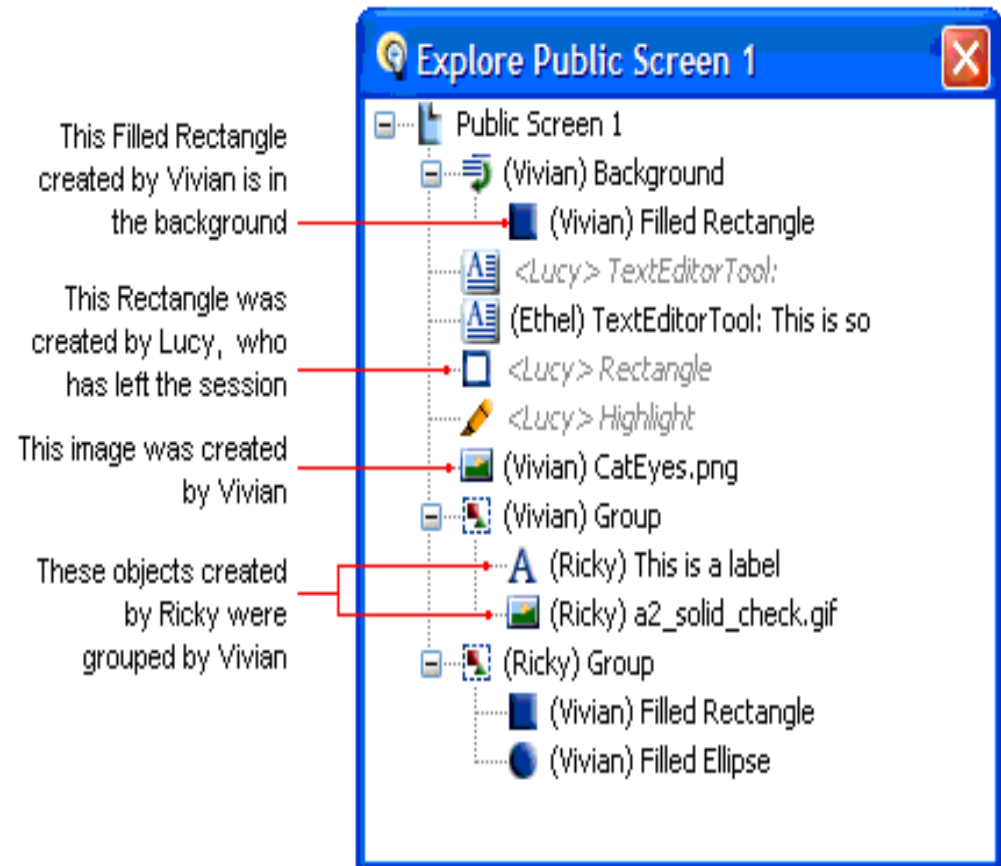
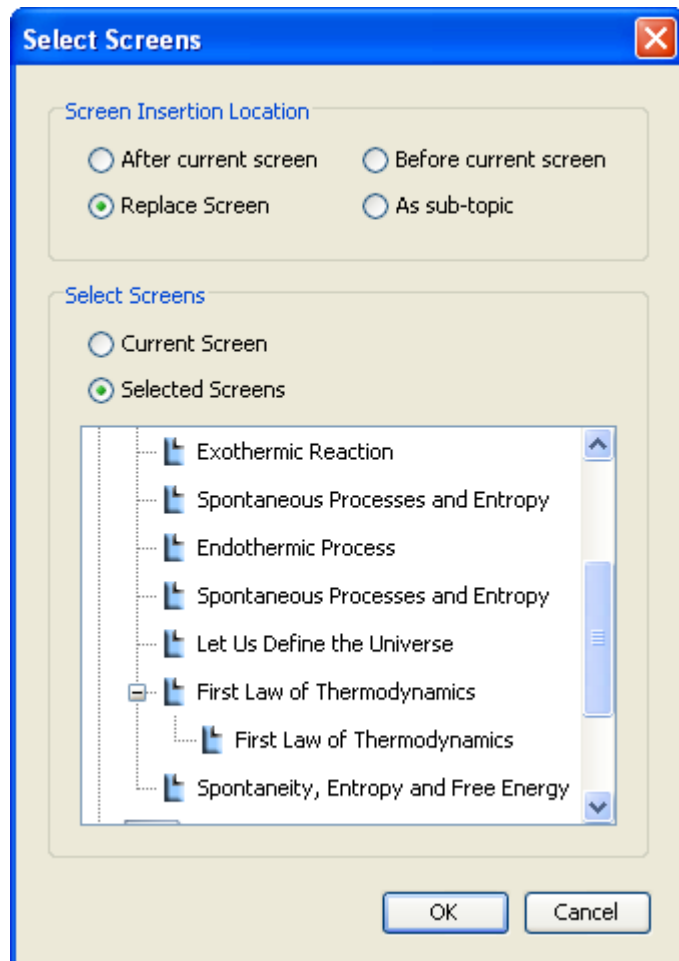


Wimba vs Elluminate Presentations versus Whiteboard content

Note the cumbersome process of having to organize and manage Presentation content, particularly versus how on the fly content is managed in the Wimba Classroom.

Importing, Managing, and Accessing Public Screen Whiteboard presentation content in Elluminate v10



How Presentation content displays once uploaded (no preview options or Presentation headers)

Public Screen

Main Room

Public Screen

The "Audio Check"

Welcome!

Classroom Overview

Interacting in Class

Text Chat

Media Bar

Landing Page

Setup Wizard

Headsets

Calling In

Get Wired!

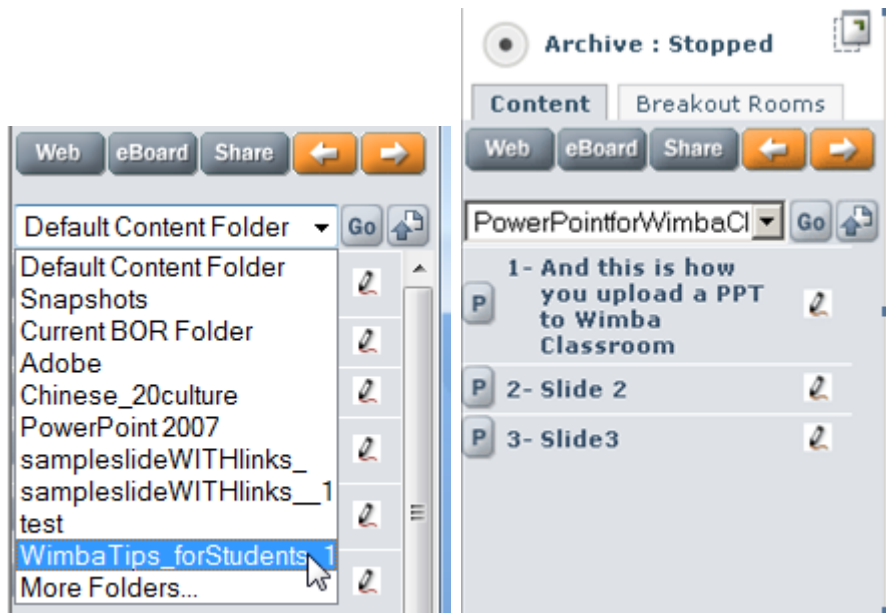
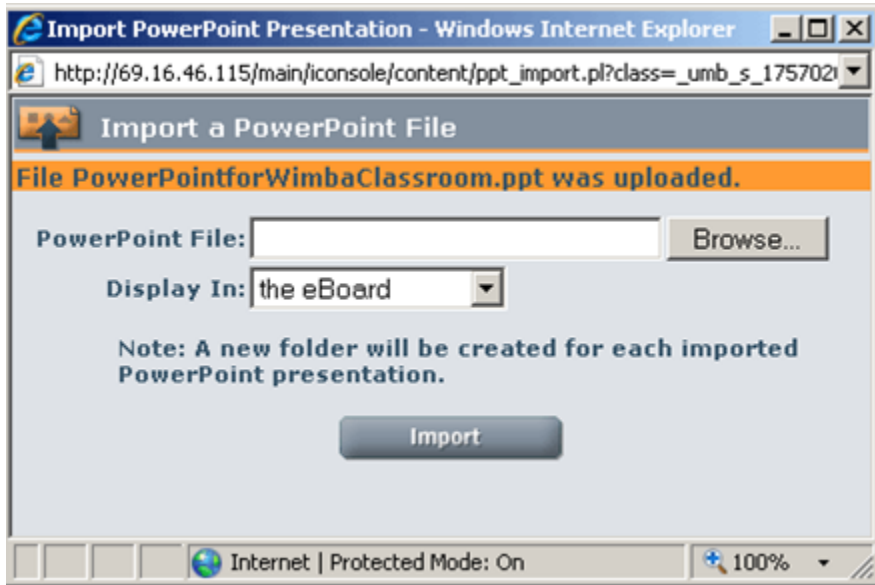
Common Problems

Support Info

Users Manual

Good Luck!

Accessing and Importing PowerPoint Presentation on the Fly in Wimba Classroom



Comparison of Wimba vs Elluminate Presentations

Issue	Wimba	Elluminate
Presentation upload	Through back end and import on the fly – happens in a new pop-up Window	Import through the whiteboard – slowly converts each slide on in front of the Elluminate room.
Presentation management	Can manage content from Manage content directly on the Wimba server.	Screens or categories but never lists the name of the presentation to organize via Explore Screen but on the fly is poor with presentation headers (need verification).
Integrity of slide presentations.	Duplicate imports will append “_1” to filename. Powerpoint presentations’ integrity is intact.	Duplicates possible and can be confusing. Also, if you import while not “focused” on the right slide, you can import PPTs within other PPTs – no integrity.
Presentation translation by default from different versions of PPT	2003, 2007, and 2010 seems to work fine.	Problems with file conversion in or out of Canvas option when converted from 2003 to 2007 (worked fine in 2010 but needs verification)
Previewing slide ability	P to the left to preview.	No previewing option (needs verification).
Viewing imported slide numbers	List slide numbers.	List slides in order with no numbers.
Presentation file names	Error on import with for files with spaces.	Need to verify in testing.
Placement of content	Aligns with names in alphabetical order of presentation in content folder and can create folders within to manage content as well.	Lost content and can’t see on backend and need to create slide divisions to manage uploaded content that is cumbersome (needs verification).