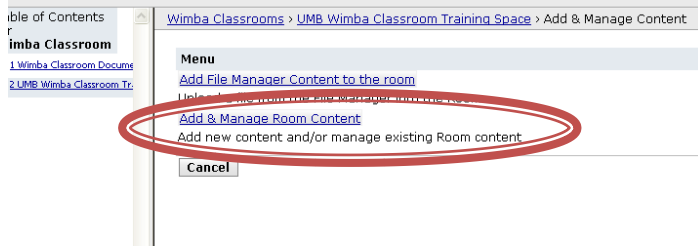
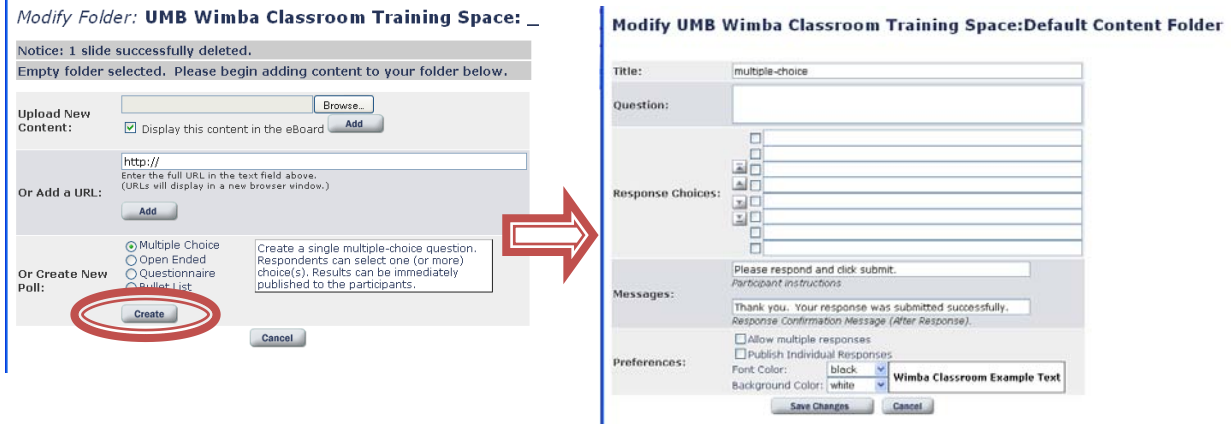


Online Polling in Wimba

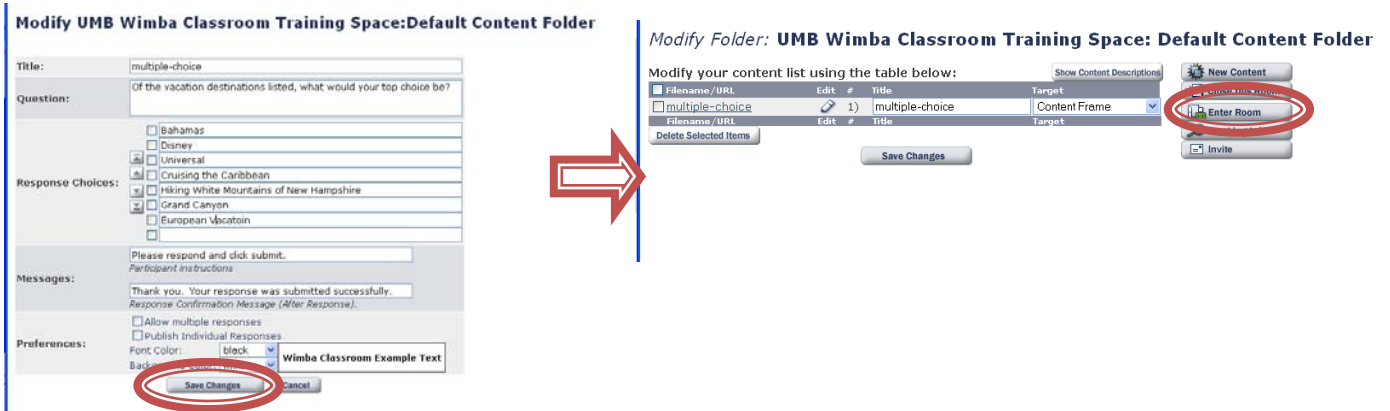
First, go to the landing page and choose Add and Manage Room Content



Once there, click on the create button as shown and then fill in your question, select your font and background colors:



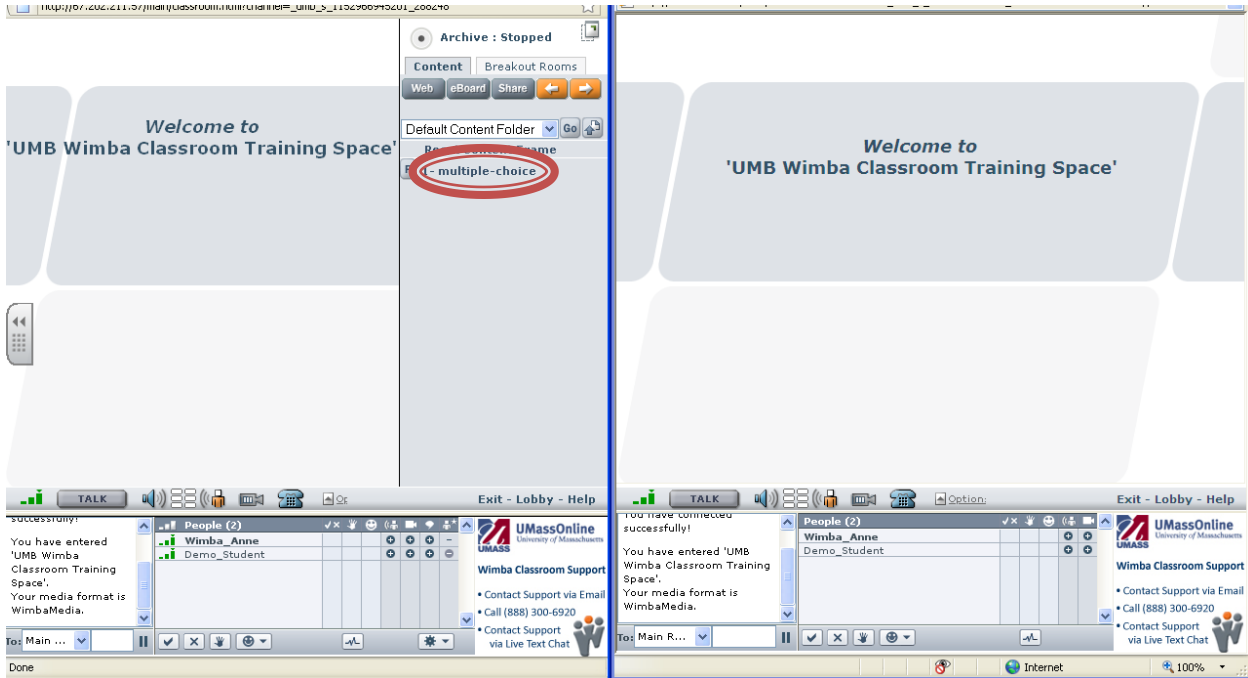
Example: I want to poll the class to find out the most popular vacation venues. Once you create your question, click on Save Changes. At this point, you can click on Enter Room and your poll will be in the default window ready for you to deploy.



Instructor View

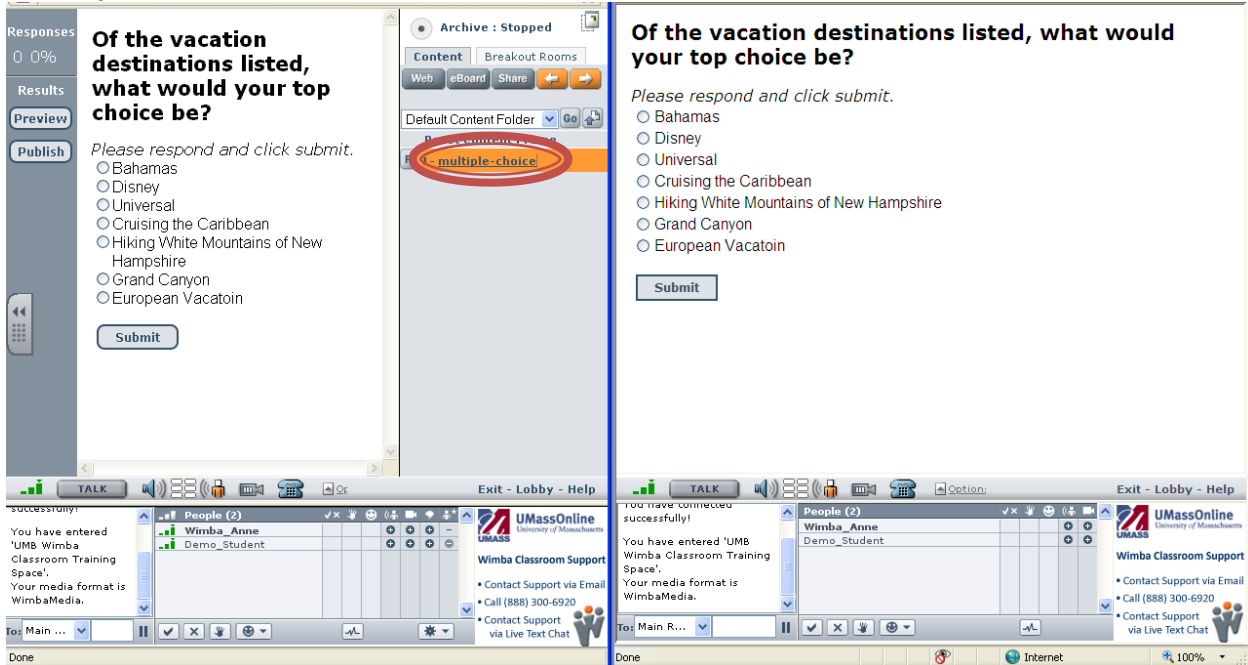
Click on multiple choice and the student view will show the question with polling controls seen only by the instructor as shown in the sequential screenshots.

Student View



Click to push the slide to the students

Students selects and submits



You can preview the results

Student confirmation

- All students will see the results when you publish as shown in the sequential screen shot below.

Responses: 1 50%

Results

Preview

Publish

Archive : Stopped

Content Breakout Rooms

Web eBoard Share

Default Content Folder

Reset Content Frame

1 - multiple-choice

Destination	Count	Percentage
Bahamas	0	0%
Disney	0	0%
Universal	0	0%
Cruising the Caribbean	1	100%
Hiking White Mountains of New Hampshire	0	0%
Grand Canyon	0	0%
European	0	0%

UMassOnline University of Massachusetts

Wimba Classroom Support

- Contact Support via Email
- Call (888) 300-6920
- Contact Support via Live Text Chat

People (2)

- Wimba_Anne
- Demo_Student

You have entered 'UMB Wimba Classroom Training Space'. Your media format is WimbaMedia.

Exit - Lobby - Help

Thank you. Your response was submitted successfully.

Archive : Stopped

Content Breakout Rooms

Web eBoard Share

Default Content Folder

Reset Content Frame

1 - multiple-choice

Destination	Count	Percentage
Bahamas	0	0%
Disney	0	0%
Universal	0	0%
Cruising the Caribbean	1	100%
Hiking White Mountains of New Hampshire	0	0%
Grand Canyon	0	0%
European Vacatoin	0	0%

UMassOnline University of Massachusetts

Wimba Classroom Support

- Contact Support via Email
- Call (888) 300-6920
- Contact Support via Live Text Chat

People (2)

- Wimba_Anne
- Demo_Student

You have entered 'UMB Wimba Classroom Training Space'. Your media format is WimbaMedia.

Exit - Lobby - Help

Archive : Stopped

Content Breakout Rooms

Web eBoard Share

Default Content Folder

Reset Content Frame

1 - multiple-choice

Destination	Count	Percentage
Bahamas	0	0%
Disney	0	0%
Universal	0	0%
Cruising the Caribbean	1	100%
Hiking White Mountains of New Hampshire	0	0%
Grand Canyon	0	0%
European Vacatoin	0	0%

UMassOnline University of Massachusetts

Wimba Classroom Support

- Contact Support via Email
- Call (888) 300-6920
- Contact Support via Live Text Chat

People (2)

- Wimba_Anne
- Demo_Student

You have entered 'UMB Wimba Classroom Training Space'. Your media format is WimbaMedia.

Exit - Lobby - Help