




JOB AID FOR TOGGLING BETWEEN “ON” AND “OFF” SETTINGS FOR THE “PERSONAL IDENTIFICATION SECURITY” FEATURE IN McAfee INTERNET SECURITY 200x¹ (where “x” stands in for “7” or “8” or “9”).¹

Step 1.

From the Start menu, choose All Programs.

Step 2.


In All Programs, choose McAfee > McAfee Security Center, to reveal a screen depicted in the screenshot directly below.

You must be in the Advanced Menu to change the setting for the Personal information protection feature. If in the Basic Menu, you will see an  Advanced Menu link in the bottom of the left hand column (circled in red in the screenshot below). If the item instead reads  Basic Menu, skip to step 3. Otherwise, click on the  Advanced Menu link to enter the Advanced Menu.



¹ McAfee.Com has full guides for McAfee Internet Security 2007, 2008 and 2009 available for downloading in PDF format at <http://home.mcafee.com/Root/Support.aspx?page=Support> but these guides do not provide explicit instructions for turning on and off the setting for the Personal information protection feature or the Personal Firewall. Note that the instructions herein can be adapted easily to instructions for enabling and disabling the Personal Firewall.

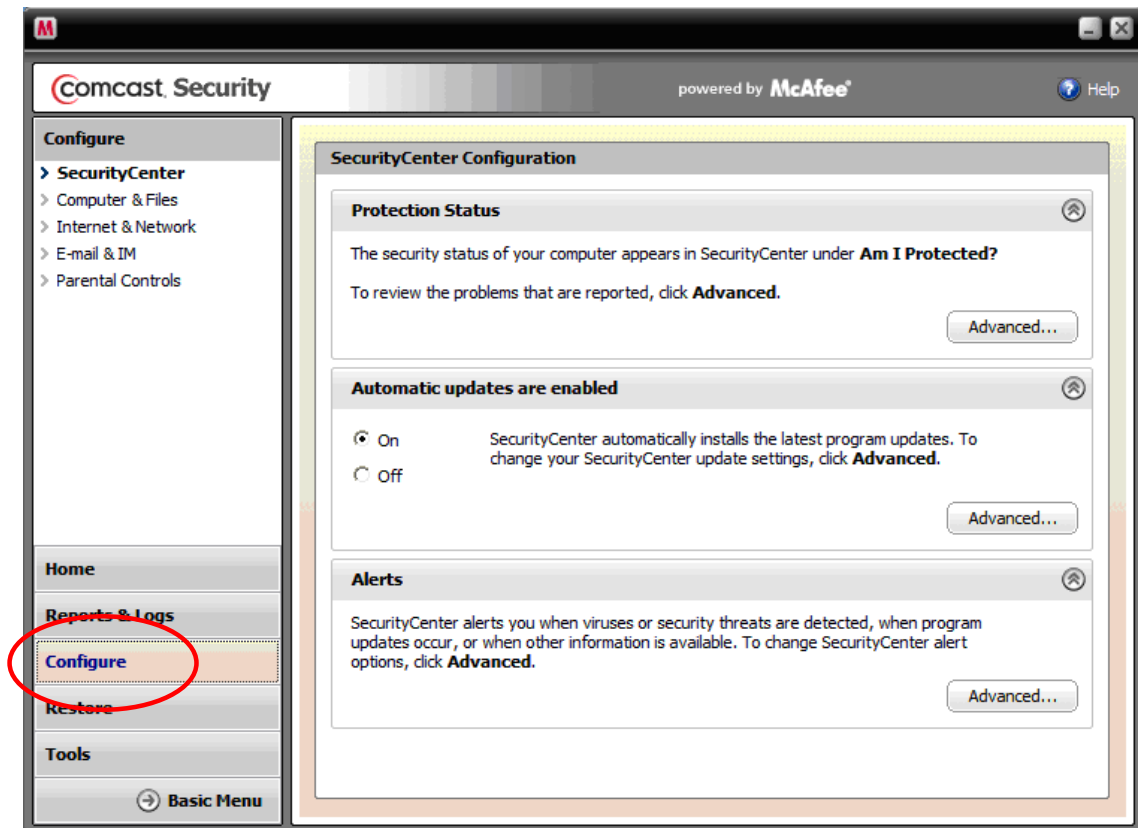
Step 3.

In McAfee Security Center Advanced Menu, you will find a link in the lower right hand corner of the left-hand column which will read “ Basic Menu” (as circled in red in the screenshot directly below). The presence of this link will confirm you are operating in the Advanced Menu, as you need to be operating.



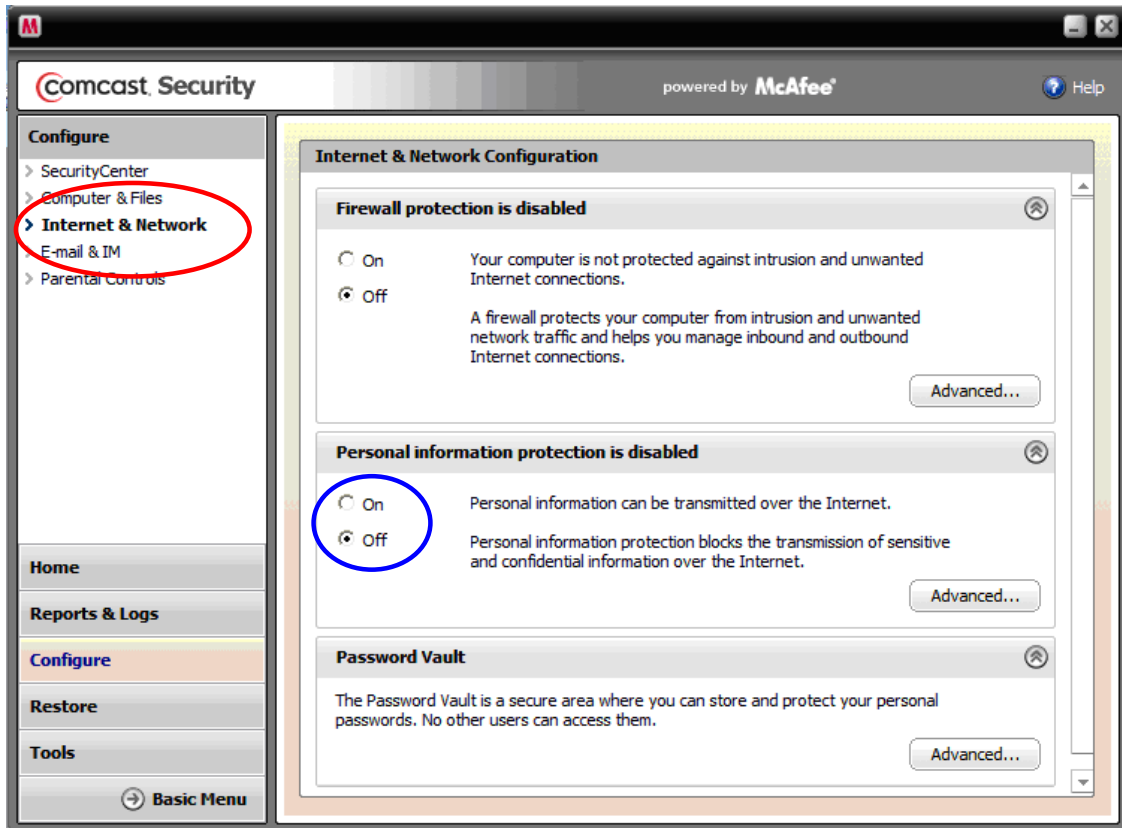
Step 4.

Click on the “Configure” button (below “Home” and “Reports & Logs” buttons) in the left column of the Advanced Menu (as circled in red in the screenshot directly below).



Step 5.

Click on “Internet and Network” below Configure/ SecurityCenter/Computer & Files in the left column (circled in the screenshot directly below) to reveal a right-side window pane which provides on/off switches for the “Firewall protection” and “Personal information protection” features of the McAfee Internet Security 2007, 2008 and 2009.



Step 6.

The middle area of the right-side window pane relates to “Personal information protection”. Use the “on” or “off” radio buttons to toggle between on and off settings for the Personal information protection feature. (These settings are circled in blue, in the screenshot directly above.)

For Wimba Classroom sessions, this setting must be “off”. At all other times, you may wish to leave the setting “on” (for maximum protection against computer identify theft).

NOTE: in the screenshot directly above, the setting for McAfee’s “Firewall protection” is set to the “off” position. The McAfee Personal Firewall impedes users’ ability to function in Wimba Classroom sessions, just as does enabling the Personal information protection feature. However, the “Windows Firewall” provided by Microsoft Inc as an integrated feature of the Windows XP and Windows Vista operating systems *does not* impede operations in Wimba Classroom sessions, and can be set to the on position in a Windows control panel, and can be left enabled and operational with no ill effects during Wimba Classroom sessions.